

Dimensions

Dimensions for metal series

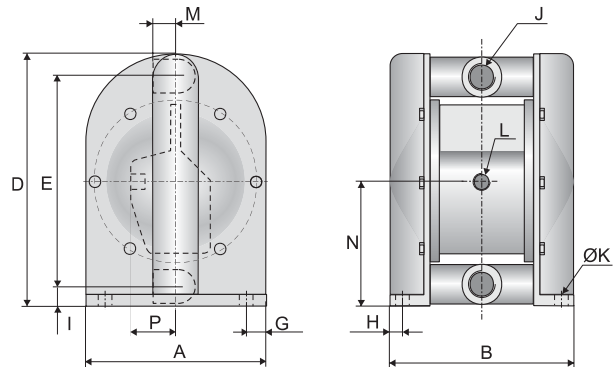
Dimensions in mm (where other is not indicated)

Dimensions in inch (where other is not indicated)

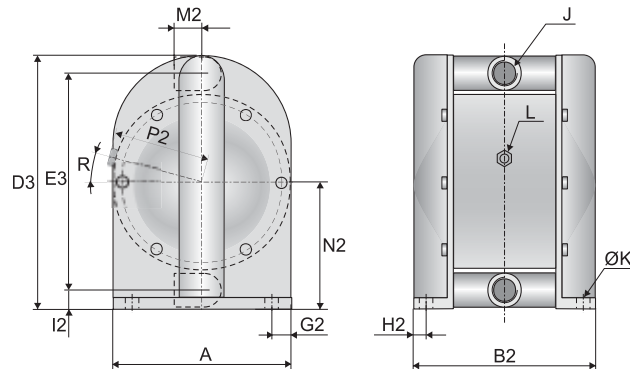
Dim	Pump size				
	25	70	120	220	420
A	105 4.13	150 5.91	200 7.87	270 10.63	350 13.78
B	116 4.57	168 6.61	195 7.68	265 10.43	342 13.46
B2	-	156 6.14	204 8.03	280 11.02	-
D	160 6.30	229 9.02	302 11.89	412 16.22	537 21.14
D2	173 6.81	249 9.80	322 12.68	-	-
D3	-	229 9.02	310 12.20	422 16.61	-
E	132 5.20	190 7.48	252 9.92	346 13.62	449 17.68
E2	147 5.79	210 8.27	279 10.98	380 15.96	497 19.57
E3	-	192 7.56	257 10.12	348 13.70	-
F	13 0.51	20 0.79	20 0.79	-	-
G	10 0.39	17 0.67	20 0.79	25 0.98	35 1.38
G2	-	17 0.67	20 0.79	31 1.22	-
H	12 0.47	19 0.75	20 0.79	28 1.10	33 1.30
H2	-	13 0.51	23 0.91	34 1.34	-
I	15 0.59	20 0.79	27 1.06	34 1.34	48 1.89
I2	-	19 0.75	27 1.06	36 1.42	-
J	1/2" 1/2	3/4" 3/4	1" 1	1 1/2" 1 1/2	2" 2
J2	3/8" 3/8	1/2" 1/2	3/4" 3/4	1" 1	1 1/2" 1 1/2
ØK	6.5 0.26	8.5 0.33	8.5 0.33	8.5 0.33	8.5 0.33
L	1/8" 1/8	1/4" 1/4	1/4" 1/4	1/2" 1/2	1/2" 1/2
M	19 0.75	29 1.14	33 1.30	44 1.73	57 2.24
M2	-	40 1.57	52 2.05	70 2.76	-
N	81 3.19	115 4.53	153 6.02	207 8.15	274 10.79
N2	-	115 4.53	155 6.10	212 8.35	-
P	30 1.18	47 1.85	36 1.42	57 2.24	60 2.36
P2	-	80 3.15	105 4.13	143 5.63	-
R	-	15° 15°	15° 15°	0 0	-
S	14.5 0.57	21.2 0.83	27 1.06	35 1.38	42 1.65
ØT	20 0.79	30 1.18	30 1.18	-	-
U	1270* 50.0*	1270* 50.0*	1270* 50.0*	-	-
V	285 11.22	360 14.17	400 15.75	-	-

* = Any length up to 2000 mm on request
* = Any length up to 79" on request

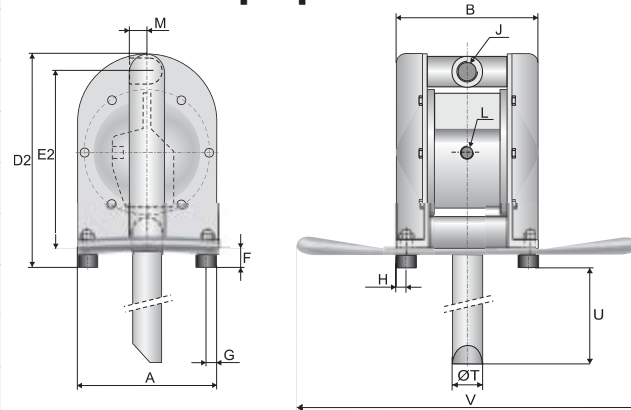
Aluminium and cast iron pumps T



Stainless steel pumps T



Drum pumps TD



Twin pumps TT

